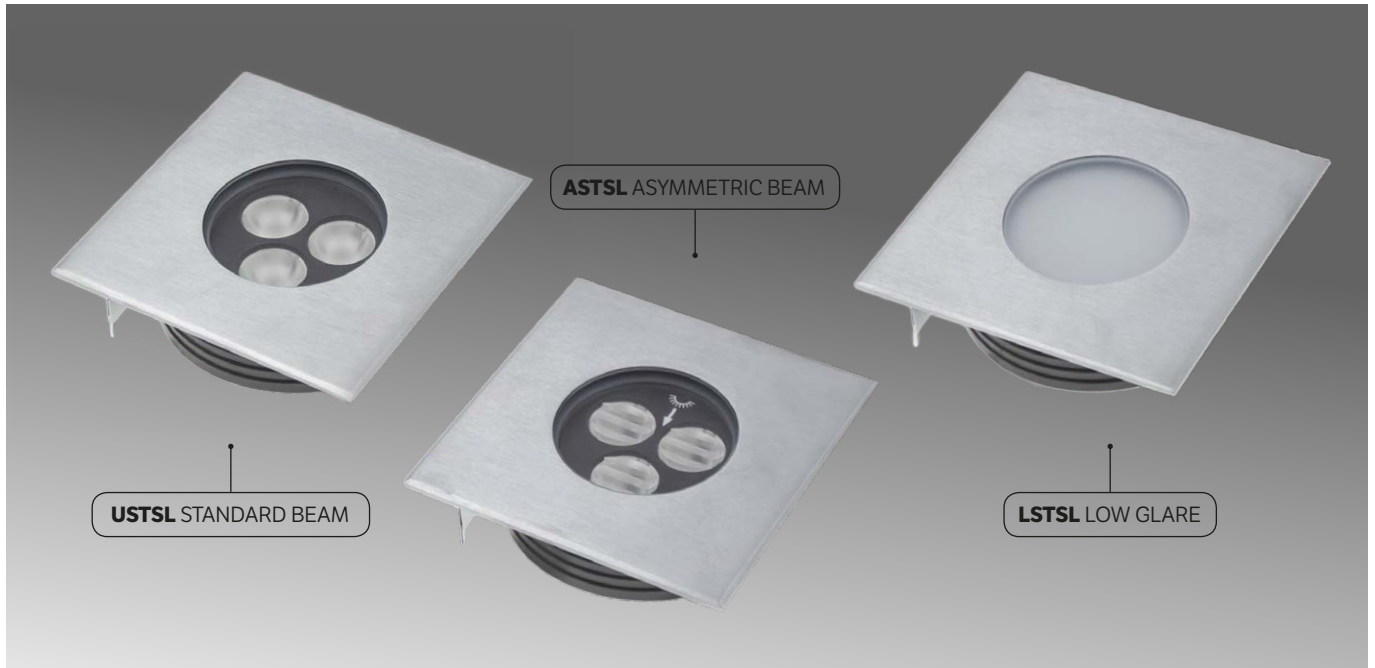


Exterior Recessed Deck Light Uplight Square

EX353



SPECIFICATIONS

COLOUR TEMP	2700K
INPUT VOLTAGE	24V DC
IP RATING	IP67
CUT OUT	Ø103mm
IK RATING	IK08
WORKING TEMP	-20° to 40°C
GLASS TYPE	Step Tempered Glass T=8mm
WEIGHT CAPACITY	< 3370kg
CRI	80
LIFESPAN	40,000 Hours
BEAM ANGLE	USTSL Uplight - 45° ASTSL Asymmetric - 45° 35° LSTSL Low Glare - N/A
FRONT FACE	316 Stainless Steel
DRIVER	Remote Driven, Sold separately 24V DC
COMPLETE WITH	Pre wired with 24V IP68 feed
APPLICATION	Exterior Deck/stair light.

INSTALLATION NOTES

- 1/ Minimum deck thickness **10mm**.
- 2/ Minimum **50mm** depth clearance.
- 3/ Take pride with installation. All cable joints must be Resin or IP68 type (standard crimps, terminal blocks and PVC tape are not suitable cable joining methods.) Incorrect installation will result in water ingress and luminaire failure.
- 3/ Halcyon recommends using a Constant Voltage driver approximately double the wattage of the circuit load due to inrush current which can momentarily exceed the maximum amperage of the driver if the driver output is not high enough relative to the load. The inrush current may trigger the self-protection/ reset function of the driver causing the circuit to flash on and off repeatedly.

USTSL / ASTSL

388 LUMENS	6 WATTS	24V PARALLEL
----------------------	-------------------	------------------------

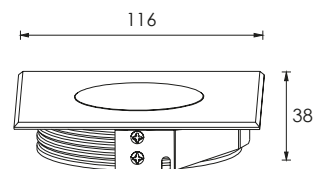
LSTSL

30 LUMENS	0.8 WATTS	24V PARALLEL
---------------------	---------------------	------------------------



Driver sold separately, specify when ordering.

DIMENSIONS



AVAILABLE IN

DESCRIPTION	CODE
316 STS 2700K Standard	EX353 USTSL
316 STS 2700K Asymmetric	EX353 ASTSL
316 STS 2700K Low Glare	EX353 LSTSL