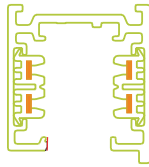




Three Circuit Medium Output Track Spot

S216



<1570
LUMENS

18
WATTS

THREE
CIRCUIT

SPECIFICATIONS

DIMENSIONS	Spot Diameter / Length: D80mm x L145mm Base Height / Length: H32mm x L80mm
COLOUR TEMP	3000K Warm White or 4000 Natural White
LUMENS	1440lm 3000K / 1570lm 4000K
CRI	90+
LIFESPAN	50,000 Hours (L70)
BEAM ANGLE	38°
TILT ANGLE	90°
ROTATE ANGLE	360°
MATERIAL	Aluminium & PC
DRIVER	Dimmable driver incorporated
APPLICATION	Interior commercial
WARRANTY	5 Year Warranty

AVAILABLE IN

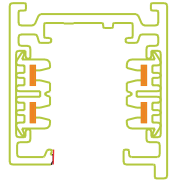
DESCRIPTION	CODE
White 3000K	S216 W3K
White 4000K	S216 W4K
Black 3000K	S216 B3K
Black 4000K	S216 B4K

ACCESSORIES

DESCRIPTION	CODE
24° Lens	S200 L242
Wall Wash Lens	S200 WW2
Honeycomb	S200 HC2

See pages 204-209 for Three Circuit Track Lengths and Three Circuit Track accessories.

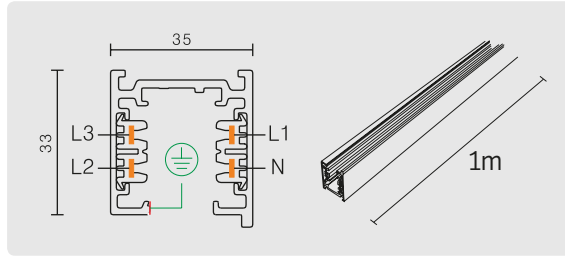




1M TRACK LENGTH

AC 240V
16A

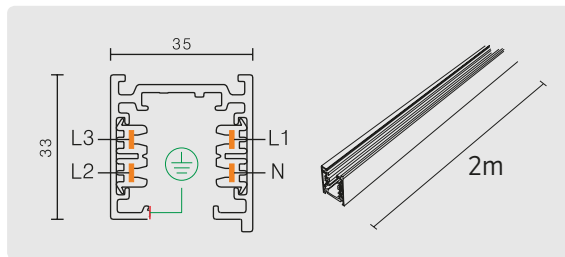
	T410 W
	T410 S
	T410 BL



2M TRACK LENGTH

AC 240V
16A

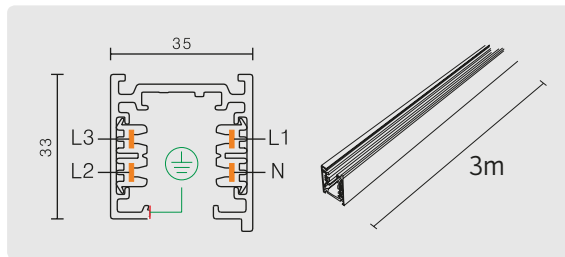
	T420 W
	T420 S
	T420 BL



3M TRACK LENGTH

AC 240V
16A

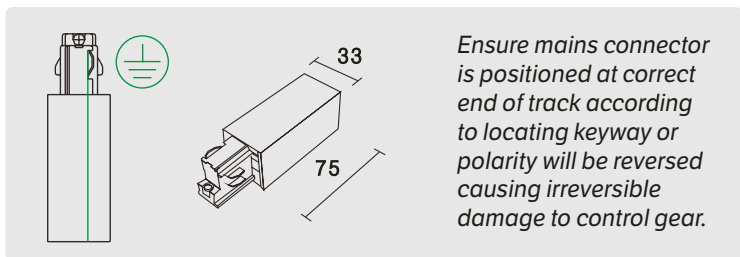
	T430 W
	T430 S
	T430 BL



**MAINS CONNECTION
EARTH RIGHT**

AC 240V
16A

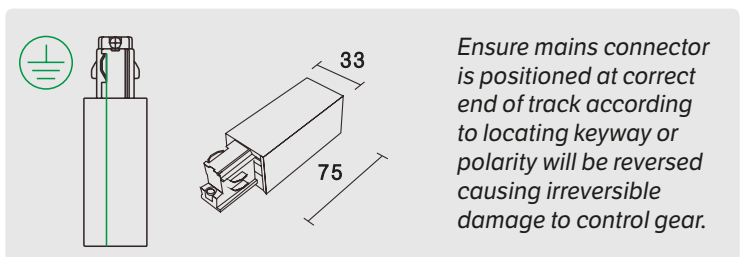
	T431 MRW
	T431 MRS
	T431 MRB

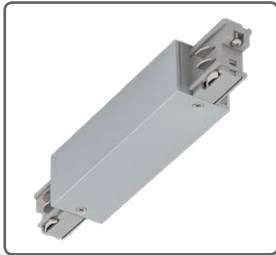
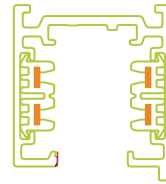


**MAINS CONNECTION
EARTH LEFT**

AC 240V
16A

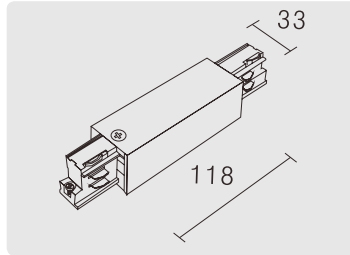
	T431 MLW
	T431 MLS
	T431 MLB





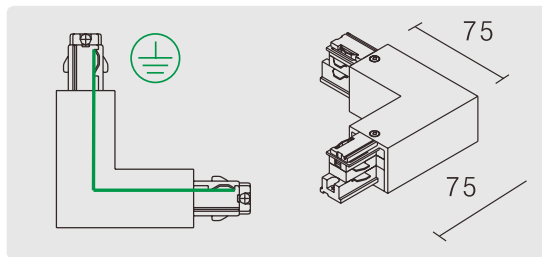
CENTRE MAINS CONNECTION
 AC 240V
 16A

- T434 CW**
- T434 CS**
- T434 CB**



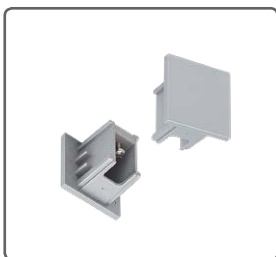
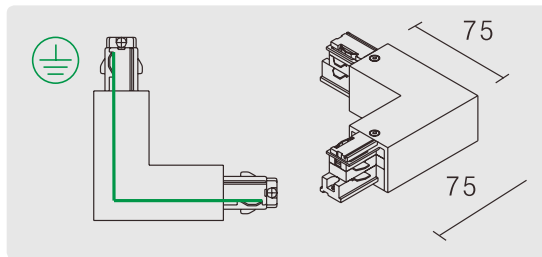
"L" JOIN EARTH INSIDE
 AC 240V
 16A

- T435 LIW**
- T435 LIS**
- T435 LIB**



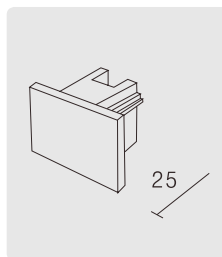
"L" JOIN EARTH OUTSIDE
 AC 240V
 16A

- T435 LOW**
- T435 LOS**
- T435 LOB**



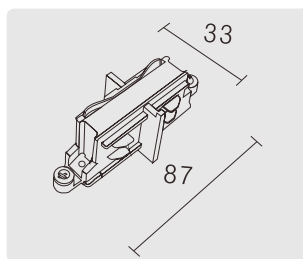
TRACK END CAP
Plastic

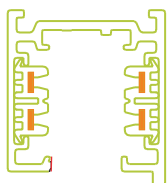
- T432 EW**
- T432 ES**
- T432 EB**



STANDARD JOIN STRAIGHT
 AC 240V
 16A

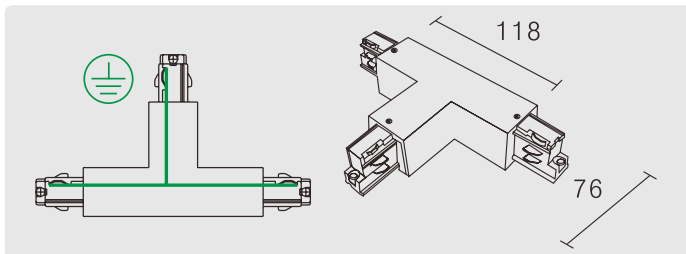
- T433 JW**
- T433 JS**
- T433 JB**





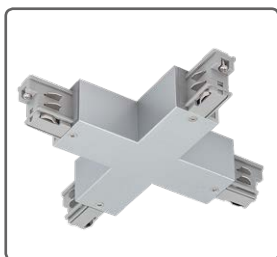
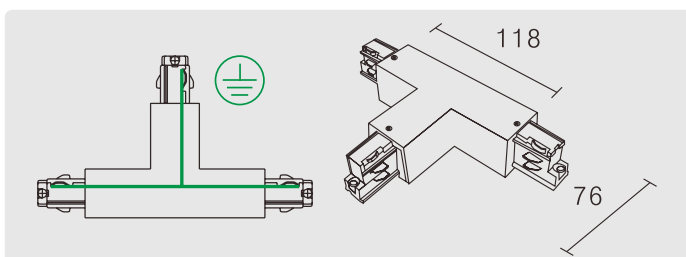
**“T” JOIN
EARTH LEFT**
AC 240V
16A

- T436 TLW**
- T436 TLS**
- T436 TLB**



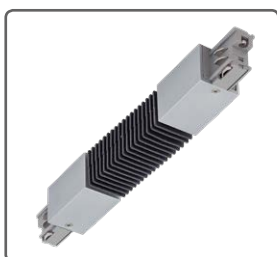
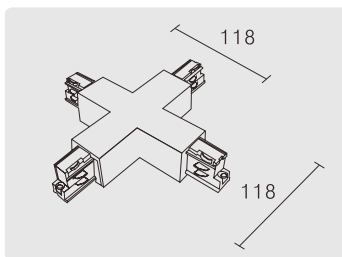
**“T” JOIN
EARTH RIGHT**
AC 240V
16A

- T436 TRW**
- T436 TRS**
- T436 TRB**



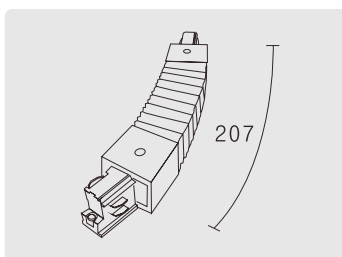
4 WAY JOIN
AC 240V
16A

- T437 XW**
- T437 XS**
- T437 XB**



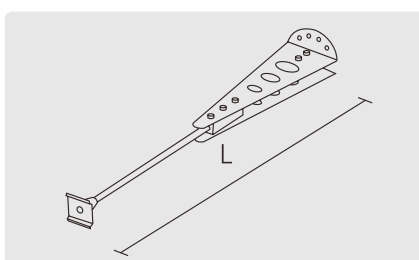
FLEXIBLE JOIN
AC 240V
16A

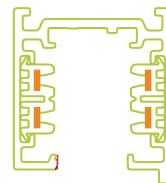
- T439 FW**
- T439 FS**
- T439 FB**



SUSPENSION ROD
0.2 - 1m
Max Load 200nm

- T444 RW**
- T444 RS**
- T444 RB**

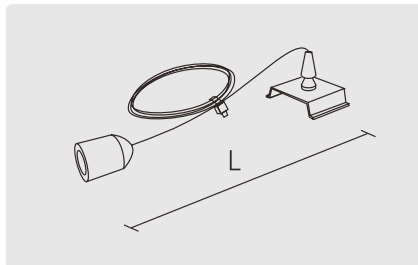




SUSPENSION CABLE
3M

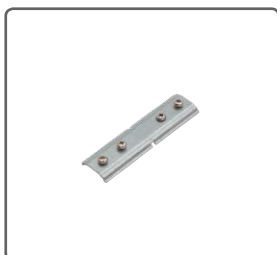
Max Load 100nm

- T443 SW
- T443 SS
- T443 SB



3 CIRCUIT MAINS ADAPTOR WITH CORD GRIP

- T441 TAW
- T441 TAS
- T441 TAB



SUSPENSION STRENGTH PLATE
MINI JOINER STRAIGHT

MINI JOINER STRAIGHT

- T433 SP



SUSPENSION STRENGTH PLATE
STANDARD JOINER STRAIGHT

STANDARD JOINER STRAIGHT

- T434 SP



SUSPENSION STRENGTH PLATE
"L"

- T435 SP



SUSPENSION STRENGTH PLATE
"T"

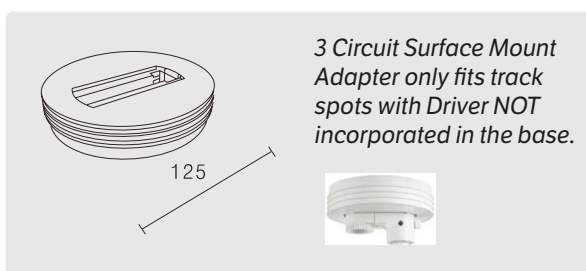
- T436 SP

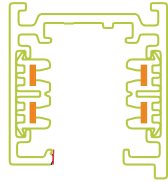


SURFACE MOUNT ADAPTER

Diameter 120mm

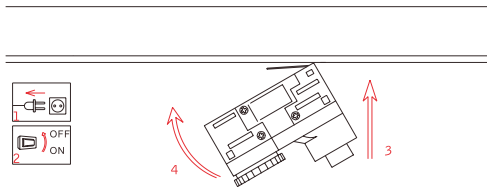
- T260 CMW
- T260 CMS
- T260 CMB





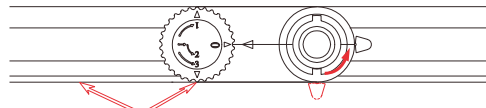
3 CIRCUIT ADAPTER [DRIVER NOT IN BASE] SECURING AND SETTING

①



Insert the adapter into track.

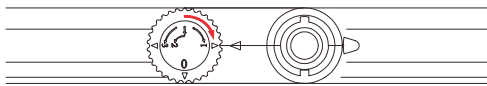
②



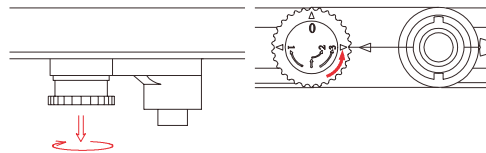
Fix the adapter



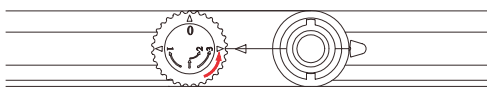
③ Select circuit



Rotate the rotary knob to turn on the circuit NO.1

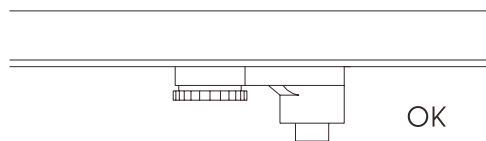


Pull and rotate the rotary knob to turn on the circuit NO.2



Rotate the rotary knob again to turn on the circuit NO.1

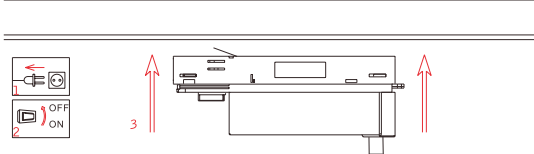
④



Finish

3 CIRCUIT ADAPTER [DRIVER IN BASE] SECURING AND SETTING

①



Switch-off the power supply and insert the transadapter into the track.

②



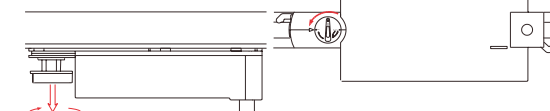
Fasten the transadapter with double-lock.



③ Select circuit



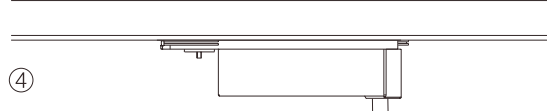
Rotate the rotary knob clockwise to circuit No. 1.



Pull and rotate the rotary knob counter clockwise to circuit No.2.



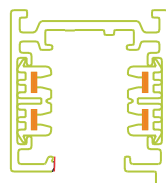
Rotate the rotary knob counter clockwise to circuit No.3.



Finish

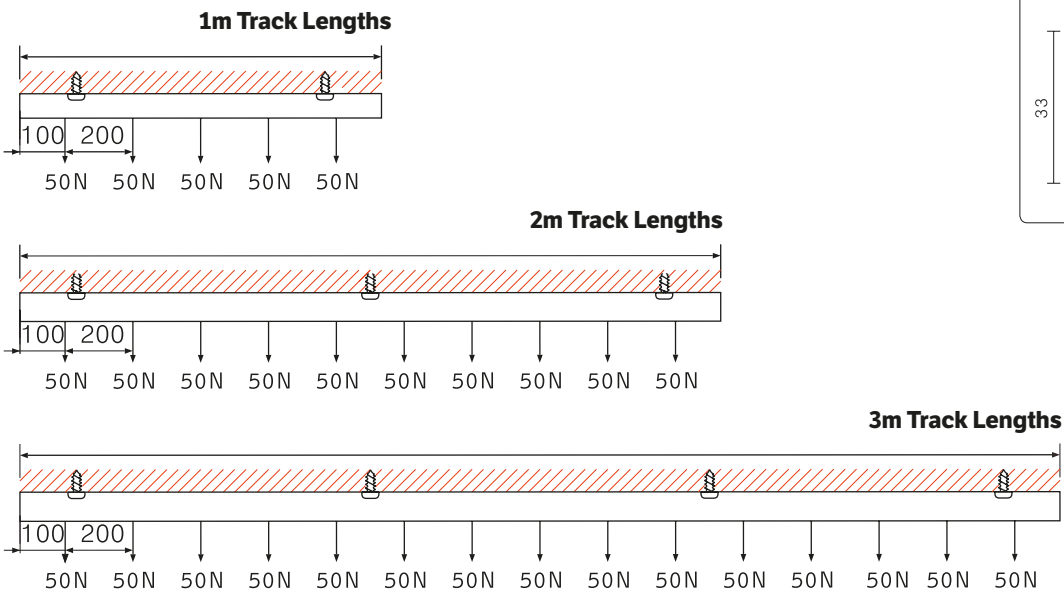
Track, Components & Accessories

Three Circuit



TRACK SECURING / LOADING

Installation Note: See screw locations on diagrams below for recommended spacing of fixing/suspension points. Halcyon recommends suspension/fixing approximately every 600-1000mm. Track lengths come complete with pre-drilled fixing points but are easily custom drilled to suit any installation.



ELECTRICAL PARAMETERS

