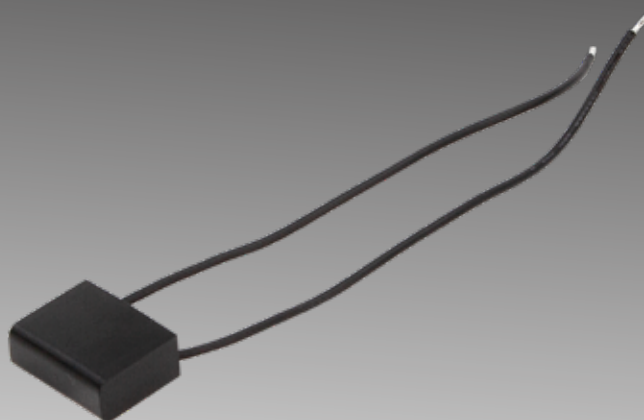


Load Correction Device / Dummy Load / Bypass

<1.4W



HL1000



CODE	POWER CONSUMPTION [W]	POWER SUPPLY	DIMENSIONS [mm]
HL1000 LCD	< 1.4W	AC100-240V, 50/60Hz	25 x 20 x 10mm

PRODUCT DESCRIPTION

HL1000 is suitable for use with 2-wire, mains-powered dimmers that use TRIAC dimming e.g. leading, trailing or universal dimming. HL1000 is not to be used with 3-wire dimming units.

HL1000 can improve dimming performance and load stability for low power LED lighting loads across the dimming range. The HL1000 also ensures an off state for TRIAC dimming channels which can eliminate “ghosting” of flickering when off. The HL1000 is designed to be connected to 220-240V AC, 50Hz mains voltages.

HL1000 leads are not double insulated and must be installed with adequate electrical insulation or in an enclosure to meet any relevant wiring regulations.

WIRING DIAGRAM

