



NEW CATALOGUE DUE 2015
PLEASE VISIT WEBSITE FOR
LATEST EXTERIOR PRODUCTS.



EXTERIOR 2014



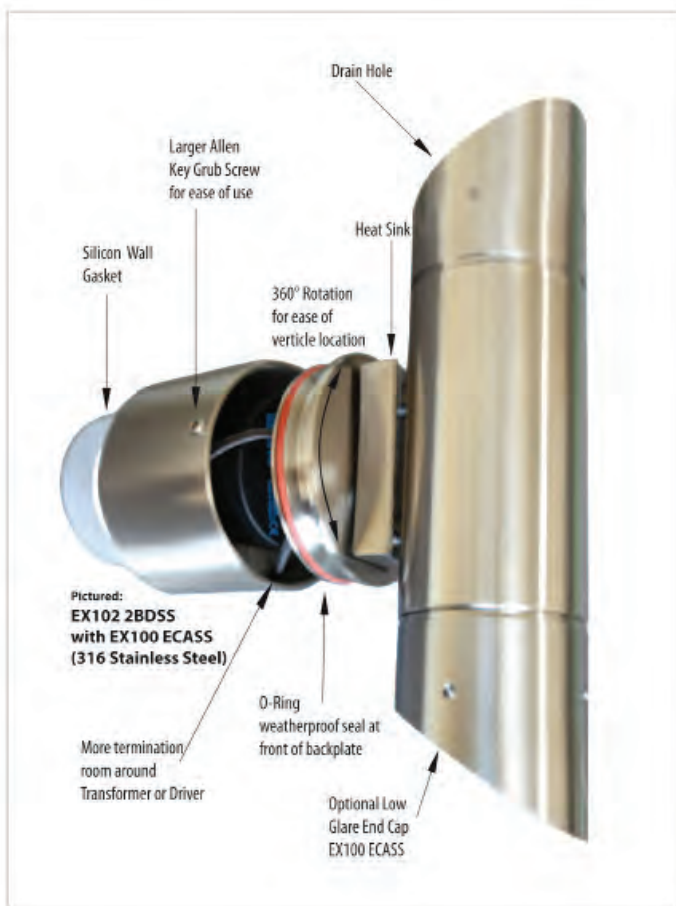
2013 EXTERIOR INDEX

MARINER RANGE LED & HALOGEN	3-4
LED SURFACE MOUNT / COLUMN SPOTS	5-6
SPIKE SPOT	6
COLUMN	7-8
LED DOWNLIGHTS	9-10
UP / DOWNS & CUBES	10
WALL / STAIR	11-14
MINI	15-17
UPLIGHTS / BOLLARDS	18
FLOODS	19-20
TRANSFORMERS / CC DRIVERS	21
CV DRIVERS	22

Please visit our website
www.halcyonlights.co.nz
or call our sales division on
(09) 273 9177 for more info.

MARINER RANGE

Please note all fittings in the “Mariner Range” can be ordered with 4.8W LED, 6.6W LED or Halogen, specifications in this catalogue are all for 4.8W LED version



MARINER RANGE GUARANTEE

Manufactured from non-reactive quality components, completely waterproof, robust and long lasting. Halcyon Lighting gives a lifetime warranty on componentry excluding consumables (lamps, lampholders, transformers and seals)

LED MARINER COLUMN SINGLE DIR. - IP66

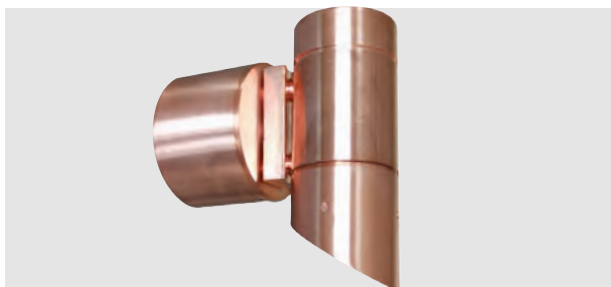


EX101 1BDSSL

Diode: Osram 30° Constant Current
 Colour: Warm White 3150K or Nat. White 4000K
 Finish: EX101 1BDCOL-Copper, EX101 1BDSSL- Stainless Steel
 Material: 316 Stainless Steel & Solid Copper
 Dim: Spot: 56 x 105mm Base: 77 x 55 x D125mm
 C/W: Incorporated Driver & LED 4.8 Module

CRI	lm	mA	Watts	IES
80	NW: 366 WW: 318	350	4.8W	✓

LED MARINER - SINGLE DIR. WITH END CAP - IP66



EX101 1BDCOL with EX100 ECACO

Diode: Osram 30° Constant Current
 Colour: Warm White 3150K or Nat. White 4000K
 Finish: Copper & EX101 1BDSSL with EX100 ECASS- STS
 Material: 316 Stainless Steel & Solid Copper
 Dim: Spot 56 x 145mm Base: 77 x 55 x D125mm
 C/W: Incorporated Driver & LED 4.8W Module
 NB: EX100 ECACO sold seperately

CRI	lm	mA	Watts	IES
80	NW:366 WW: 318	350	4.8W	✓

LED MARINER - TWIN SPOT ADJ.DIR. - IP66



EX103 2BDSSL

Diode: Osram 30° Constant Current
 Colour: Warm White 3150K or Nat. White 4000K
 Finish: EX103 2BDCOL Copper & EX103 2BDSSL - St. Steel
 Material: 316 Stainless Steel & Solid Copper
 Dim: 56 x 120mm Base: 97 x 55 x D125mm
 C/W: Incorporated Driver & LED 4.8W Module

CRI	lm	mA	Watts	IES
80	NW: 2x366 WW: 2x318	350	2 x 4.8W	✓

LED MARINER - COLUMN TWIN DIR - IP66

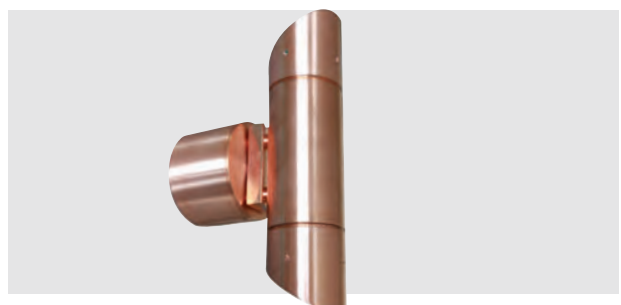


EX102 2BDCOL

Diode: Osram 30° Constant Current
 Colour: Warm White 3150K or Nat. White 4000K
 Finish: EX102 2BDCOL- Copper, EX102 2BDSSL- St.Steel
 Material: 316 Stainless Steel & Solid Copper
 Dim: Spot: 56 x 150mm Base:77 x 55 x D100mm
 C/W: Incorporated Driver & LED4.8W Module

CRI	lm	mA	Watts	IES
80	NW: 2 x 366 WW: 2 x 318	350	2 x 4.8W	✓

LED MARINER - TWIN DIR/ANGLED END CAP - IP66



EX102 2BDCOL with EX100 ECACO

Diode: Osram 30° Constant Current
 Colour: Warm White 3150K or Nat. White 4000K
 Finish: Copper, EX102 2BDSSL with EX100 ECASS - STS
 Material: 316 Stainless Steel & Solid Copper
 Dim: Spot: 56 x 225mm Base:77 x 55 x D125mm
 C/W: Incorporated Driver & LED4.8W Module
 NB: EX100 ECASS sold separately

CRI	lm	mA	Watts	IES
80	NW: 2 x 366 WW: 2 x 318	350	2 x 4.8W	✓

LED MARINER - SPOT - IP66

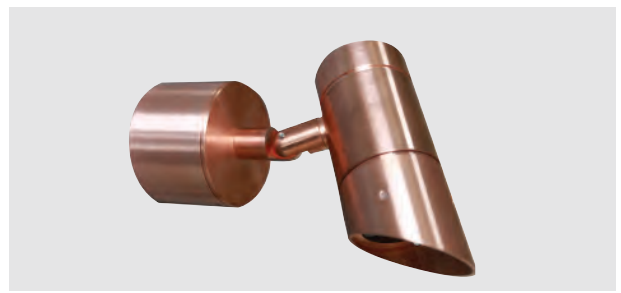


EX103 1BDSSL

Diode: Osram 30° Constant Current
 Colour: Warm White 3150K or Nat. White 4000K
 Finish: EX103 1BDCOL-Copper, Stainless Steel
 Material: 316 Stainless Steel & Solid Copper
 Dim: 56 x 20mm Base: 77x 55 x D120mm
 C/W: Incorporated Driver & LED4.8W Module

CRI	lm	mA	Watts	IES
80	NW: 366 WW: 318	350	4.8W	✓

LED MARINER - SPOT /ANGLE END CAP - IP66



EX103 1BDCOL with EX100 ECACO

Diode: Osram 30° Constant Current
 Colour: Warm White 3150K or Nat. White 4000K
 Finish: Copper, EX103 1BDSSL with EX100 ECASS-STs
 Material: 316 Stainless Steel & Solid Copper
 Dim: 56 x 135mm Base:77 x 55 x D120mm
 C/W: Incorporated Driver & LED 4.8W Module

CRI	lm	mA	Watts	IES
80	NW: 366 WW: 318	350	4.8W	✓

LED MARINER - SPIKE SPOT WITH END CAP -IP66



EX103 1SCOL with EX100 ECACO

Diode: Osram 30° Constant Current
 Colour: Warm White 3150K or Nat. White 4000K
 Finish: Copper & EX103 1SSSL -316 Stainless Steel
 Material: 316 Stainless Steel & Solid Copper
 Dim: Spot:D56 x L105 Height: 325mm Spike: 165mm
 C/W: LED4.8W Module

CRI	lm	mA	Watts	IES
80	NW: 366 WW: 318	350	4.8W	✓

LED MARINER - SPIKE SPOT WITH END CAP -IP66



EX103 1SSSL with EX100 ECASS

Diode: Osram 30° DC Constant Current
 Colour: Warm White 3150K or Nat. White 4000K
 Finish: EX103 1SCOL with EX100 ECACO Copper & St. Steel
 Material: 316 Stainless Steel & Solid Copper
 Dim: Spot: 135 x 325 x D56mm Spike: 165mm
 C/W: LED4.8W Module

CRI	lm	mA	Watts	IES
80	NW: 366 WW: 318	350	4.8W	✓

EXTERIOR SURFACE MT SPOT - IP66



EX772 1BSL

Diode: Osram 35° Constant Current
 Colour: Warm White 3150K
 Finish: Silver Anodised, EX772 1BBL-Black Resin Powder Coat
 Material: Aluminium
 Dim: Spot: 60 x D152mm Base:100mm
 C/W: Incorporated Driver

CRI	lm	mA	Watts	IES
80	255	350	3.6W	✓

EXTERIOR SURFACE MT SPOT - IP65



EX789 1BBR

Diode: Bridgelux 40° Constant Current
 Colour: Warm White 3000K
 Finish: White EX789 1BW, Black EX789 1BBL, Brown EX789 1BBR
 Material: Aluminium
 Dim: Spot: 64mm x 103mm Base: 64mm Length: 175mm
 C/W: Incorporated Driver

CRI	lm	mA	Watts	IES
80	860	350	9.8W	✓

EXTERIOR SURFACE MT SPOT - IP66



EX777 1BSL

Diode: Osram 35° Constant Current
 Colour: Warm White 3150K
 Finish: Silver Anodised or EX777 1BBL-Black Resin Powder Coat
 Material: Aluminium
 Dim: Spot 80 x D176mm Base: 100mm
 C/W: Incorporated Driver

CRI	lm	mA	Watts	IES
80	510	350	7.2W	✓

EXTERIOR SURFACE MT SPOT - IP66



EX778 1BBL

Diode: Osram 35° Constant Current
 Colour: Warm White 3150K
 Finish: Silver Anodised or EX778 1BBL-Black Resin Powder Coat
 Material: Aluminium
 Dim: Spot 84 x D164mm Base:100mm
 NB: Remote Driver

CRI	lm	mA	Watts	IES
80	510	350	7.2W	✓

EXTERIOR WALL/HORIZONTAL MT SPOT - IP66



EX782 1BSL

Diode: Osram 35° Constant Current
 Colour: Warm White 3150K
 Finish: Silver Anodised or EX782 1BBL-Black Resin Powder Coat
 Material: Aluminium
 Dim: Spot 128 x D240mm Base:100mm
 NB: Remote Driver

CRI	lm	mA	Watts	IES
80	1275	350	18W	✓

EXTERIOR COLUMN - IP66



EX770 1BSL

Diode: Osram 35° Constant Current
 Colour: Warm White 3150K
 Finish: Silver Anodised
 Material: Aluminium
 Dim: Spot 60 x D152mm Base:100mm
 C/W: Incorporated Driver
 NB: Single Direction

CRI	lm	mA	Watts	IES
80	255	350	3.6W	✓

EXTERIOR COLUMN TWIN SMALL - IP66



EX771 2BBL

Diode: Osram 35° Constant Current
 Colour: Warm White 3150K
 Finish: EX771 2BSL-Silver Anodised or Black Resin Powder Coat
 Material: Aluminium
 Dim: 64 x 200 x D135mm
 C/W: Incorporated Driver

Length	CRI	lm	mA	Watts	IES
200	80	2x 255	350	7.2W	✓

EXTERIOR COLUMN TWIN LARGE - IP66



EX776 2BSL

Diode: Osram 35° Constant Current
 Colour: Warm White 3150K
 Finish: Silver Anodised or EX776 2BBL-Black Resin Powder Coat
 Material: Aluminium
 Dim: 112 x 250 x D160mm
 C/W: Incorporated Driver

CRI	lm	mA	Watts	IES
80	2 x 510	350	15W	✓

EXTERIOR SPIKE SPOT SMALL - IP66



EX764 1SBL

Diode: Osram 35° Constant Current
 Colour: Warm White 3150K
 Finish: EX764 1SS-Silver Anodised or Black Resin Powder Coat
 Material: Aluminium
 Dim: Spot Dia: 60 x 105 x D290mm
 C/W: 3m Lead

Spike Dep	CRI	lm	mA	Watts	IES
185	80	255	350	3.6W	✓

EXTERIOR SPIKE SPOT LARGE - IP66



EX769 1SS

Diode: Osram 35° Constant Current
 Colour: Warm White 3150K
 Finish: Silver Anodised or EX769 1BSL-Black Resin Powder Coat
 Material: Aluminium
 Dim: Spot Dia: 103 x 100 x H320mm
 C/W: 3m Lead

Spike Dep	CRI	lm	mA	Watts	IES
180	80	510	350	7.2W	✓

EXTERIOR SPIKE SPOT EXTRA LARGE - IP66



EX783 1SSL

Diode: Osram 35° Constant Current
 Colour: Warm White 3150K
 Finish: Silver Anodised or EX783 1SBL-Black Resin Powder Coat
 Material: Aluminium
 Dim: Spot Dia: 128 x H365mm
 C/W: 3M Lead

Spike Dep	CRI	lm	mA	Watts	IES
185	80	1275	350	18W	✓



EXTERIOR COLUMN SINGLE - IP65



EX790 1BSL

Diode: Osram 30° Constant Current
 Colour: Warm White
 Finish: EX790 1BSL-Silver, EX790 1BBL-Black
 Material: Aluminium
 Dim: 60 x 150 x D95mm
 C/W: Incorporated Driver

CRI	lm	mA	Watts	IES
82	245	350	3.6W	✓

EXTERIOR COLUMN TWIN - IP65



EX791 2BSL

Diode: Osram 30° Constant Current
 Colour: Warm White
 Finish: EX791 2BSL-Silver, EX791 2BBL-Black
 Material: Aluminium
 Dim: 60 x 250 x D95mm
 C/W: Incorporated Driver

CRI	lm	mA	Watts	IES
82	2 x 245	350	2 x 3.6W	✓

EXTERIOR COLUMN DOUBLE TWIN - IP65



EX792 4BSL

Diode: Osram 30° Constant Current
 Colour: Warm White
 Finish: EX792 4BSL-Silver, EX792 4BBL-Black
 Material: Aluminium
 Dim: 130 x 250 x D95mm
 C/W: Incorporated Driver

CRI	lm	mA	Watts	IES
82	558	350	4 x 3.6W	✓

EXTERIOR COLUMN SINGLE LARGE - IP65



EX793 1BSL

Diode: Osram 30° Constant Current
 Colour: Warm White
 Finish: EX793 1BSL-Silver, EX793 1BBL-Black
 Material: Aluminium
 Dim: 110 x 160 x D150mm
 C/W: Incorporated Driver

CRI	lm	mA	Watts	IES
82	767	350	14.4W	✓

EXTERIOR CEILING MT - IP65



EX793 1CSL

Diode: Osram 30° Constant Current
 Colour: Warm White
 Finish: EX793 1CSL-Silver, EX793 1CBL-Black
 Material: Aluminium
 Dim: 110 x 160mm
 C/W: Incorporated Driver

CRI	lm	mA	Watts	IES
82	767	350	14.4W	✓

EXTERIOR COLUMN TWIN LARGE - IP65



EX794 2BSL

Diode: Osram 30° Constant Current
 Colour: Warm White
 Finish: EX794 2BSL-Silver, EX794 2BBL-Black
 Material: Aluminium
 Dim: 110 x 300 x D150mm
 C/W: Incorporated Driver

CRI	lm	mA	Watts	IES
82	2 x 767	350	2 x 14.4W	✓

EXTERIOR COLUMN SINGLE- IP65



EX795 1BSL

Diode: Osram 30° Constant Current
 Colour: Warm White
 Finish: EX795 1BSL-Silver, EX795 1BBL-Black
 Material: Aluminium
 Dim: 60 x 60 x 150 x D95mm
 C/W: Incorporated Driver

CRI	lm	mA	Watts	IES
82	245	350	3.6W	✓

EXTERIOR COLUMN TWIN - IP65



EX796 2BSL

Diode: Osram 30° Constant Current
 Colour: Warm White
 Finish: EX796 2BSL-Silver, EX796 2BBL-Black
 Material: Aluminium
 Dim: 60 x 60 x 250 x D95mm
 C/W: Incorporated Driver

CRI	lm	mA	Watts	IES
82	2 x 245	350	2 x 3.6W	✓

EXTERIOR COLUMN DOUBLE TWIN - IP65



EX797 4BSL

Diode: Osram 30° Constant Current
 Colour: Warm White
 Finish: EX797 4BSL-Silver, EX797 4BBL-Black
 Material: Aluminium
 Dim: W130 x 250 x D95mm
 C/W: Incorporated Driver

CRI	lm	mA	Watts	IES
82	558	350	4 x 3.6W	✓

EXTERIOR COLUMN SINGLE LARGE - IP65



EX798 1BSL

Diode: Osram 30° Constant Current
 Colour: Warm White
 Finish: EX798 1BSL-Silver, EX798 1BBL-Black
 Material: Aluminium
 Dim: 100 x 100 x 160 x D140mm
 C/W: Incorporated Driver

CRI	lm	mA	Watts	IES
82	797	350	14.4W	✓

EXTERIOR COLUMN TWIN LARGE - IP65



EX799 2BSL

Diode: Osram 30° Constant Current
 Colour: Warm White
 Finish: EX799 2BSL-Silver, EX799 2BBL-Black
 Material: Aluminium
 Dim: 100 x 100 x 300 x D140mm
 C/W: Incorporated Driver

CRI	lm	mA	Watts	IES
82	2 x 797	350	2 x 14.4W	✓



EXTERIOR DOWNLIGHT KIT FIXED - IP44



R642 KCOL

Diode: Sharp 60°
 Colour: Warm White
 Finish: R642 KCOL-Copper, R642 KSTSL- Stainless Steel
 Material: Copper & 316 Stainless Steel
 Dim: 92 x H113mm
 C/W: DRDACC500 12W Driver

Cut Out	CRI	lm	mA	Watts	Class	IES
80mm ø	80	730	500	10W	IC	✓

EXTERIOR DOWNLIGHT KIT FIXED - IP44



R643 KSTSL

Diode: Sharp 60°
 Colour: Warm White
 Finish: R642 KCOL-Copper, R643 KSTSL- Stainless Steel
 Material: Copper & 316 Stainless Steel
 Dim: 92 x 92 x H113mm
 C/W: DRDACC500 12W Driver

Cut Out	CRI	lm	mA	Watts	Class	IES
80mm ø	80	730	500	10W	IC	✓

EXTERIOR DOWNLIGHT TILT/ROTATE KIT - IP20



R644 KSTSL

Diode: Sharp 60°
 Colour: Warm White
 Finish: R644 KCOL-Copper, R644 KSTSL- Stainless Steel
 Material: Copper & 316 Stainless Steel
 Dim: 92 x H113mm
 C/W: DRDACC500 12W Driver

Cut Out	CRI	lm	mA	Watts	Class	IES
80mm ø	80	730	500	10W	IC	✓

EXTERIOR DOWNLIGHT TILT/ROTATE KIT - IP20



R645 KCOL

Diode: Sharp 60°
 Colour: Warm White
 Finish: R645 KCOL-Copper, R645 KSTSL- Stainless Steel
 Material: Copper & 316 Stainless Steel
 Dim: 92 x 92 x H113mm
 C/W: DRDACC500 12W Driver

Cut Out	CRI	lm	mA	Watts	Class	IES
80mm ø	80	730	500	10W	IC	✓

EXTERIOR DOWNLIGHT LOW GLARE - IP44

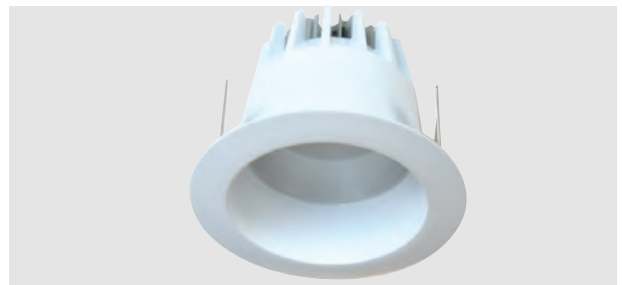


R760 SEL

Diode: Osram 55° Constant Current
 Colour: Warm White 3150K
 Finish: R760 BEL-Black, R760 SEL-Silver, R760 WEL-White
 Material: Aluminium & Perspecs
 Dim: 95 x D105mm
 NB: Corrosion Proof - Frosted Lense -

Cut Out	CRI	lm	mA	Watts	Class	IES
82mm ø	80	321	700	9W	IC	✓

EXTERIOR DOWNLIGHT LOW GLARE -IP44



R761 WEL

Diode: Osram 60° Constant Current
 Colour: Warm White 3150K
 Finish: R761 SEL-Silver, R761-WEL-White Resin Powder Coat
 Material: Aluminium & Perspecs
 Dim: 125 x D125mm
 NB: Corrosion Proof - Frosted Lense

Cut Out	CRI	lm	mA	Watts	Class	IES
102mm ø	80	597	350	11W	IC	✓

EXTERIOR DOWNLIGHT LOW PROFILE - IP65



R764 STSEL

Diode: Sharp 24° Constant Current
 Colour: Warm White 3150K
 Finish: R764 WEL - 316SS White, R764 STSEL -316SS Silver
 Material: 316 Stainless Steel
 Dim: 100 x D62mm

Cut Out	CRI	lm	mA	Watts	Class	IES
86mm ø	80	880	350	13W	IC	✓

ECONOMY PLC DOWNLIGHT LARGE - IP44



R633 WIP

Lamp: Compact Fluorescent E27
 Finish: White
 Material: Aluminium & Perspecs

Cut Out	Depth	Dia	Watts	Class
125ø	172	150	24W	IC

EXTERIOR DOWNLIGHT - IP54



R739 SEL

Diode: Osram 36° DC Constant Current
 Colour: Warm White 3150K
 Finish: R739 SEL-Silver, R739 WEL-White, Resin Powder Coat
 Material: Aluminium & Glass
 Dim: 88 x D46mm
 NB: Corrosion Proof

Cut Out	CRI	lm	mA	Watts	Class	IES
75mm ø	80	561	350	7.2W	IC	✓

EXTERIOR UPLIGHT/DOWNLIGHT - IP65

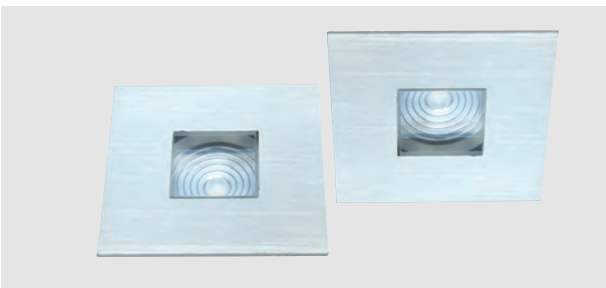


R721 BA

Diode: Oslon 80° Constant Current
 Colour: Warm White 3150K
 Finish: Br. Aluminium
 Material: Anodised Aluminium
 Dim: 64 x D53mm
 Suitable: Walk over in Deck, Wall or Recessed Downlight

Cut Out	CRI	lm	mA	Watts	Class	IES
56mm ø	80	136	700	3W	IC	✓

EXTERIOR - UPLIGHT/DOWNLIGHT - IP65



R722 BA

Diode: Oslon 80° Constant Current
 Colour: Warm White 3150K
 Finish: Br. Aluminium
 Material: Anodised Aluminium
 Dim: 64 x 64 x D53mm
 Suitable: Walk over in Deck, Wall or Recessed Downlight

Cut Out	CRI	lm	mA	Watts	Class	IES
56mm ø	80	136	700	3W	IC	✓

CEILING CUBE - IP65



EX906 1CSL

Diode: Osram Constant Current
 Colour: Warm White 3000K
 Finish: EX906 1CSL - Silver EX906 BRL - Brown EX906 1CWL - White
 Material: Die Cast Aluminium & Fr Glass
 Dim: 102 x 102 x D150mm
 C/W: Incorporated Driver

CRI	lms	mA	Watts
80	639	700	9W

EXTERIOR FIXED WALL LIGHT - IP65



EX118 STSL

Diode: Cree Constant Current
 Colour: Warm White 3150K
 Finish: Stainless Steel
 Material: 316 STS
 Dim: 130 x 130 x D63mm

Cut Out	lms	mA	Watts
n/a	136	700	3W



EXTERIOR CABINET LIGHT- IP65



R646 SSL

Diode: Osram Constant Current
 Colour: Warm White 3000K
 Finish: R646 SSL - St. Steel
 Material: 316 Stainless Steel
 Dim: 35 x H29mm

Cut Out	CRI	lm	mA	Watts	Class	IES
17mm ø	80	62	350	1.2W	IC	

EXTERIOR PIN HOLE WIDE BEAM - IP65

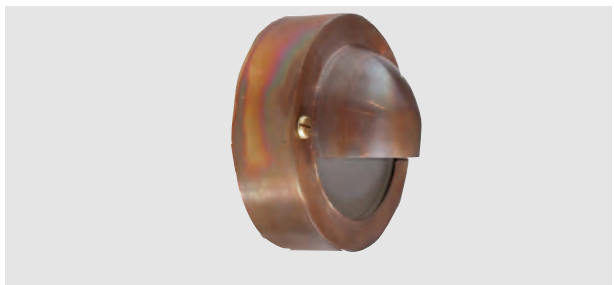


R647 SSL

Diode: Osram Constant Current
 Colour: Warm White 3000K
 Finish: R647 SSL- St. Steel, R647 COL - Copper, R647 WL - White, R647 SL- Silver, R647 BL - Black
 Material: 316 Stainless Steel & Copper
 Dim: 40 x H34.5mm

Cut Out	CRI	lm	mA	Watts	Class	IES
31mm ø	80	72	350	1.2W	IC	

SURFACE MT. EYELID WALL / STAIR TREAD

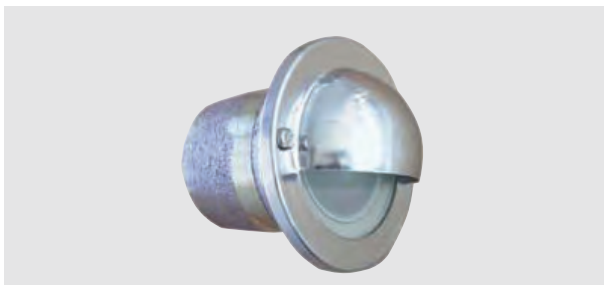


EX110 SM

Lamp: Halogen GY4.35 Burner
 Finish: EX110 SM -Copper, EX110 SMBC- Brushed Chrome
 Material: Solid Copper & Bronze, Brushed Chrome
 C/W: Frosted Glass
 Option: LED Conversion

Diameter	Depth	Watts
88mm	50mm	20W

RECESSED EYELID WALL / STAIR TREAD



EX110 RBC

Lamp: Halogen GY4.35 Burner
 Finish: EX110 RCO-Copper, EX110 RBC-Brushed Chrome
 Material: Solid Copper & Bronze, Brushed Chrome
 C/W: Frosted Glass
 Option: LED Conversion

Cut Out	Diameter	Depth	Watts
68 ø	88mm	50mm	20W

SURFACE MT. EYELID WALL / STAIR TREAD

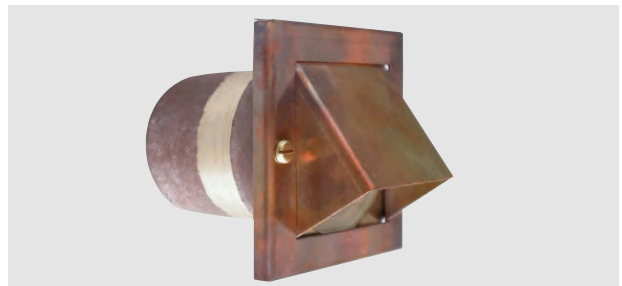


EX114 SM

Lamp: Halogen GY4.35 Burner
 Finish: EX114 SM-Copper, EX114 SMSS- Stainless Steel
 Material: Solid Copper & Bronze, 316 Stainless Steel
 C/W: Frosted Glass
 Option: LED Conversion

Diameter	Depth	Watts
87 x 87mm	55mm	20W

RECESSED EYELID WALL / STAIR TREAD

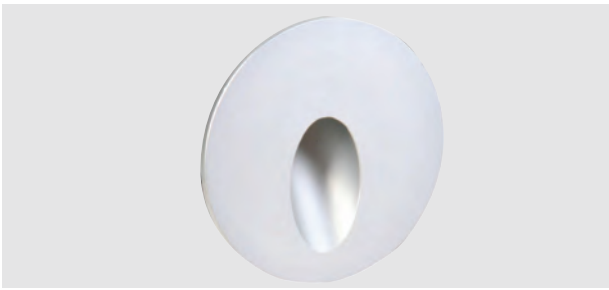


EX114 R

Lamp: Halogen GY4.35 Burner
 Finish: EX114 R-Copper, EX114 RSS - STS
 Material: Solid Copper & Bronze, 316 STS
 C/W: Frosted Glass
 Option: LED Conversion

Cut Out	Diameter	Depth	Watts
68 Ø	88mm	88mm	20W

EXT STAIR LIGHT or RECESSED WALL - IP65

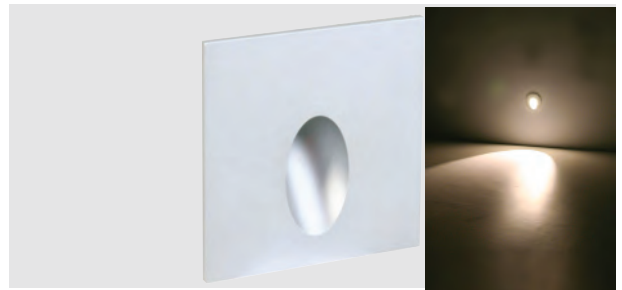


EX912 SL3

Diode: Cree Constant Current
 Colour: Warm White
 Finish: Silver
 Material: Aluminium
 Dim: 70 x D40mm
 Option: EX914 IB - Installation Box

Cut Out	CRI	lm	mA	Watts	Class
62mm Ø	80	132	700	3W	IC

EXT STAIR LIGHT or RECESSED WALL - IP65



EX913 SL3

Diode: Cree Constant Current
 Colour: Warm White
 Finish: Silver
 Material: Aluminium
 Dim: 70 x 70 x D40mm
 Option: EX914 IB - Installation Box

Cut Out	CRI	lm	mA	Watts	Class
62mm Ø	80	132	700	3W	IC

EXTERIOR WALL STAIR LIGHT FR GLASS - IP54



EX170 SL

Diode: Edison Constant Current
 Colour: Warm White 3150K
 Finish: Silver Powder Coat
 Material: Aluminium & Plastic Housing
 Dim: 100 x 100 x D90mm

Cut Out	mA	Watts	Class
92mm x 92mm	700	3W	IC

EXTERIOR WALL STAIR LIGHT LOUVRE - IP54



EX171 SL

Diode: Edison Constant Current
 Colour: Warm White 3150K
 Finish: Silver Powder Coat
 Material: Aluminium & Plastic Housing
 Dim: 100 x 100 x D90mm

Cut Out	mA	Watts	Class
92mm x 92mm	700	3W	IC

EXTERIOR WALL STAIR LIGHT REVERSED - IP54

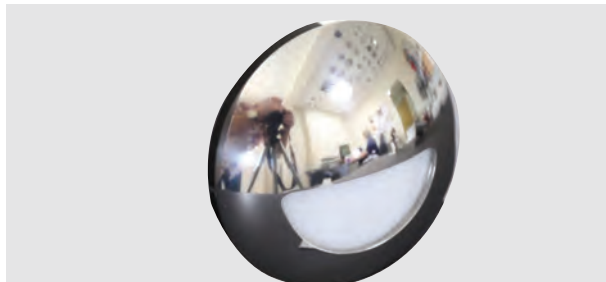


EX172 SL

Diode: Edison Constant Current
 Colour: Warm White 3150K
 Finish: Silver Powder Coat
 Material: Aluminium & Plastic Housing
 Dim: 100 x 100 x D90mm

Cut Out	mA	Watts	Class
92mm x 92mm	700	3W	IC

EXTERIOR SURFACE MT EYELID - IP65



EX190 SMSSPL

Diode: 12 or 24V DC - Constant Voltage
 Colour: Warm White
 Finish: EX190 SMBL-Black, EX190 SMCOL- Copper, EX190 SMSSL- STS, EX190 SMSSPL - Polished STS, EX190 SMWL - White
 Material: Copper or 316 Stainless Steel
 Dim: 83 x D22.5mm

Voltage	lm	Watts	IES
12 or 24V Constant Voltage	98	3W	

EXTERIOR SURFACE MT EYELID -IP65



EX190 SMSSL

Diode: 12 or 24V DC Constant Voltage
 Colour: Warm White
 Finish: EX190 SMBL-Black, EX190 SMCOL- Copper, EX190 SMSSL- STS, EX190 SMSSPL - Polished STS, EX190 SMWL - White
 Material: Copper or 316 Stainless Steel
 Dim: 83 x D22.5mm

Voltage	lm	Watts	IES
12 or 24V Constant Voltage	98	3W	

EXTERIOR SURFACE MT EYELID -IP65

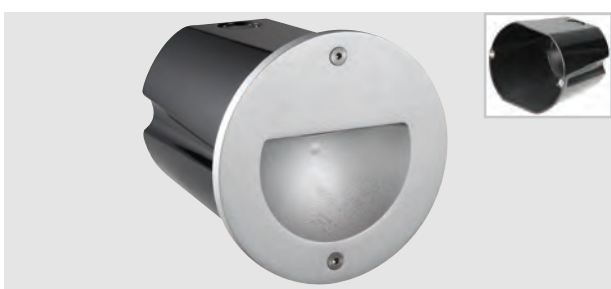


EX190 SMWL

Diode: 12 or 24V DC - Constant Voltage
 Colour: Warm White
 Finish: EX190 SMBL-Black, EX190 SMCOL- Copper, EX190 SMSSL- STS, EX190 SMSSPL - Polished STS, EX190 SMWL - White
 Material: Copper or 316 Stainless Steel
 Dim: 83 x D22.5mm

Voltage	lm	Watts	IES
12 or 24V Constant Voltage	98	3W	

EXTERIOR RECESSED EYELID - IP65



EX180 SL

Diode: Osram 85° Constant Current
 Colour: Warm White
 Finish: EX180 BL- Black, EX180 SL- Silver
 Material: Die Cast Aluminium with safety glass
 Dim: 115 x D112mm
 Option: EX182 PHO - Installation Housing - Plastic 112mm

Cut Out	CRI	lm	mA	Watts	Class	IES
95mm ø		170	700	3W	IC	

EXTERIOR RECESSED EYELID - IP65



EX181 SL

Diode: Osram 85° Constant Current
 Colour: Warm White
 Finish: EX181 BL- Black, EX181 SL- Silver
 Material: Die Cast Aluminium with safety glass
 Dim: 115 x D131mm
 Option: EX182 PHO - Installation Housing - Plastic 112mm

Cut Out	CRI	lm	mA	Watts	Class	IES
95mm ø		170	700	3W	IC	

EXTERIOR RECESSED WALL LUMINAIRES - IP65



EX175 BL

Diode: Osram 85° 24V DC Constant Voltage
 Colour: Warm White
 Finish: EX175 SL - Silver EX175 BL - Black
 Material: Die Cast Aluminium (Salt Spray Tested)
 Dim: 220 x 85 x D79mm
 NB: Constant Voltage Driver sold separately
 Option: EX174 SSHO - Installation Housing for rebating into concrete

Voltage	lm	Watts	IES
24V DC	180	3W	

EXTERIOR RECESSED WALL LUMINAIRES - IP65



EX176 BL

Diode: Osram 60° 24V DC Constant Voltage
 Colour: Warm White
 Finish: EX176 SL - Silver EX176 BL - Black
 Material: Die Cast Aluminium (Salt Spray Tested)
 Dim: 220 x 85 x D93mm
 NB: Constant Voltage Driver sold separately
 Option: EX174 SSHO - Installation Housing for rebating into concrete

Voltage	lm	Watts	IES
24V DC	180	3W	

EXTERIOR RECESSED WALL LUMINAIRES - IP65



EX177 BL

Diode: Osram 85° 24V DC Constant Voltage
 Colour: Warm White
 Finish: EX177 SL - Silver EX177 BL - Black
 Material: Die Cast Aluminium (Salt Spray Tested)
 Dim: 220 x 85 x 79mm
 NB: Constant Voltage Driver sold separately
 Option: EX174 SSHO - Installation Housing for rebating into concrete

Voltage	lm	Watts	IES
24V DC	180	3W	

EXTERIOR RECESSED WALL LUMINAIRES - IP65

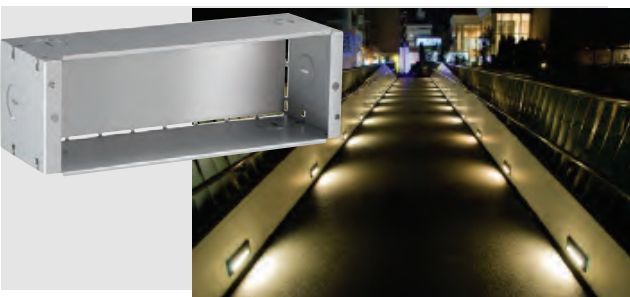


EX178 BL

Diode: Osram 60° 24V DC Constant Voltage
 Colour: Warm White
 Finish: EX178 SL - Silver EX178 BL - Black
 Material: Die Cast Aluminium (Salt Spray Tested)
 Dim: 220 x 85 x D79mm
 NB: Constant Voltage Driver sold separately
 Option: EX174 SSHO - Installation Housing for rebating into concrete

Voltage	lm	Watts	IES
24V DC	180	3W	

INSTALLATION HOUSING



EX174 SSHO

Installation Housing Option for EX175/EX176/EX177/EX178
 Material: Stainless Steel
 Dim: 205 x 75 x D70mm
 NB: Suitable for rebating into concrete

EX179 PHO FOR EX179

Installation Housing Option for EX179 (Black Plastic Housing)
 Material: Plastic Housing
 Dim: 245 x 100 x D90mm
 NB: Suitable for rebating into concrete

EXTERIOR RECESSED EYELID - IP65

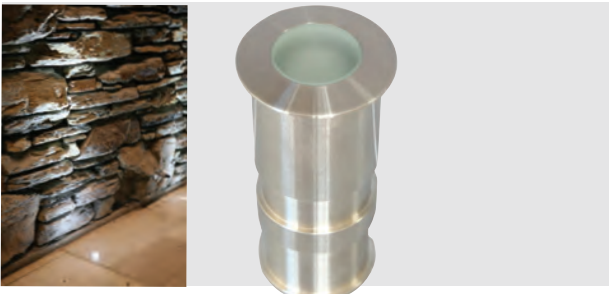


EX179 SL

Diode: Osram 100° Constant Current
 Colour: Warm White
 Finish: EX179 BL - Black, EX179 SL - Silver
 Material: Die Cast Aluminium
 Dim: 257 x 97 x D98mm
 Option: EX179 PHO - Installation Housing

Cut Out	lm	mA	Watts	IES
240 x 83mm	157	700	3W	✓

EXTERIOR UPLIGHT MINI - IP67

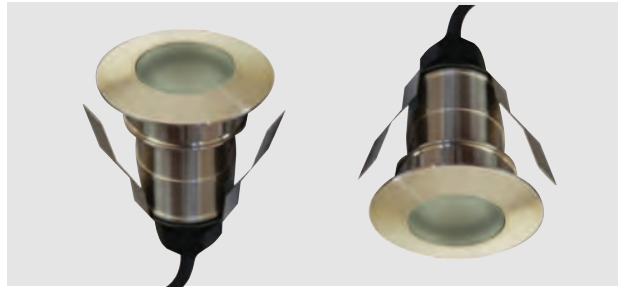


R704 STS

Diode: Osram 35° Constant Current
 Colour: Warm White 3150K & Coloured Diode Option
 Finish: Stainless Steel
 Material: 316 STS
 Dim: 47 x D90mm
 C/W STS Housing & Cable Feed
 Suitable: Walk Over In Concrete only

Insert	CRI	lm	mA	Watts	IES
40 x 90mm ø	80	85	350	1.2W	✓

EXTERIOR IN-DECK UPLIGHT TRIPLE BEAM - IP67



RD704 STS

Diode: Osram 35° Constant Current
 Colour: Warm White 3150K
 Finish: Stainless Steel
 Material: 316 STS
 Dim: 47 x D65mm
 C/W Recess Clips & Cable Feed
 Suitable: Walk Over In Deck or Recessed only

Cut Out	CRI	lm	mA	Watts	Class	IES
36mm ø	80	85	350	1.2W	IC	✓

EXTERIOR UPLIGHT TRIPLE BEAM - IP67



R709 STS

Diode: Osram 35° Constant Current
 Colour: Warm White 3150K & Coloured Diode Option
 Finish: Stainless Steel
 Material: 316 STS
 Dim: 47 x D90mm
 C/W STS Housing & Cable Feed
 Suitable: Walk Over In Concrete only

Insert	CRI	lm	mA	Watts	IES
40 x 90mm ø	80	85	350	1.2W	✓

EXTERIOR IN-DECK UPLIGHT TRIPLE BEAM - IP67

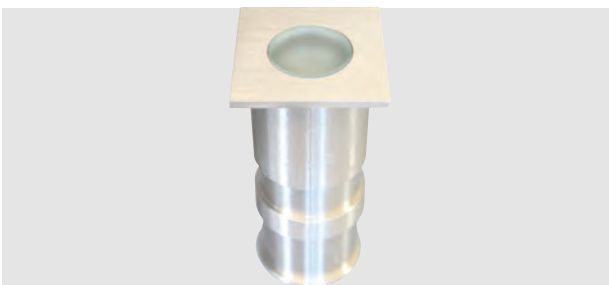


RD709 STS

Diode: Osram 35° Constant Current
 Colour: Warm White 3150K
 Finish: Stainless Steel
 Material: 316 STS
 Dim: 47 x D65mm
 C/W Recess Clips & Cable Feed
 Suitable: Walk Over In Deck or Recessed only

Cut Out	CRI	lm	mA	Watts	Class	IES
36mm ø	80	85	350	1.2W	IC	✓

EXTERIOR UPLIGHT MINI - IP67

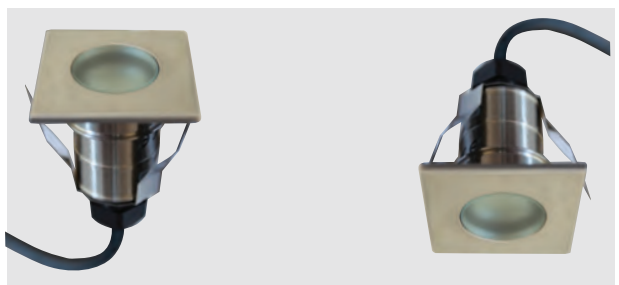


R758 STS

Diode: Osram 35° Constant Current
 Colour: Warm White 3150K & Coloured Diode Option
 Finish: Stainless Steel
 Material: 316 STS
 Dim: 47 x 47 x D90mm
 C/W STS Housing & Cable Feed.
 Suitable: Walk Over In Concrete only

Insert	CRI	lm	mA	Watts	IES
40mm x 90mm ø	80	85	350	1.2W	✓

EXTERIOR IN-DECK UPLIGHT MINI - IP67

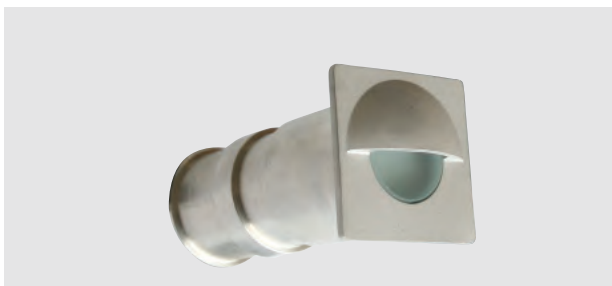


RD758 STS

Diode: Osram 35° Constant Current
 Colour: Warm White 3150K
 Finish: Stainless Steel
 Material: 316 STS
 Dim: 47 x 47 x D65
 C/W Recess Clips & Cable Feed
 Suitable: Walk Over In Deck or Recessed only

Cut Out	CRI	lm	mA	Watts	Class	IES
36mm ø	80	85	350	1.2W	IC	✓

EXTERIOR EYELID WALL LIGHT - IP67

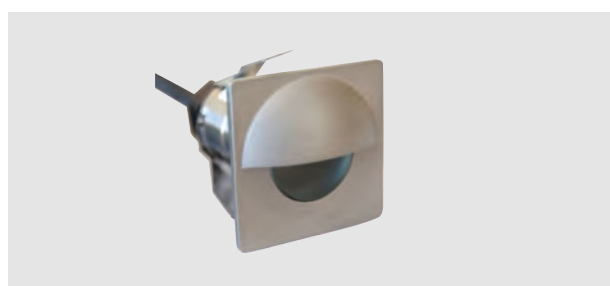


R759 STS

Diode: Osram 35° Constant Current
 Colour: Warm White 3150K & Coloured Diode Option
 Finish: Stainless Steel
 Material: 316 STS
 Dim: 47 x 47 x D90mm
 C/W: STS Housing & Cable Feed

Insert	CRI	lm	mA	Watts	IES
40 x 90mm ø	80	85	350	1.2W	✓

EXTERIOR EYELID WALL LIGHT - IP67

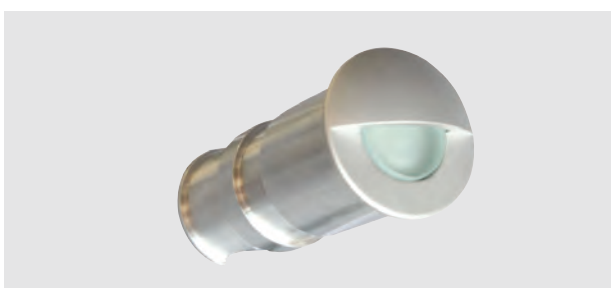


RW759 STS

Diode: Osram 35° Constant Current
 Colour: Warm White 3150K & Coloured Diode Option
 Finish: Stainless Steel
 Material: 316 STS
 Dim: 47 x 47 x D65mm
 C/W: Recess Clips & Cable Feed

Cut Out	CRI	lm	mA	Watts	Class	IES
36mm ø	80	85	350	1.2W	IC	✓

EXTERIOR EYELID WALL LIGHT - IP67

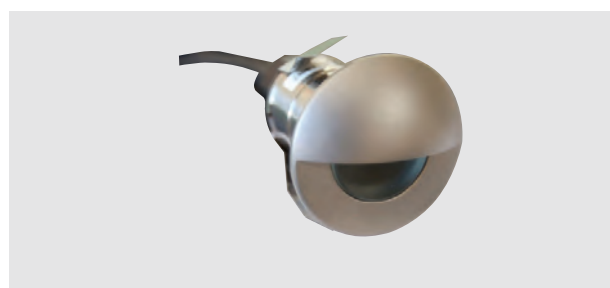


R705 STS

Diode: Osram 35° Constant Current
 Colour: Warm White 3150K & Coloured Diode Option
 Finish: Stainless Steel
 Material: 316 STS
 Dim: 57 x D90mm
 C/W: STS Housing & Cable Feed

Insert	CRI	lm	mA	Watts	IES
40 x 90mm ø	80	85	350	1.2W	✓

EXTERIOR EYELID WALL LIGHT - IP67



RW705 STS

Diode: Osram 35° Constant Current
 Colour: Warm White 3150K & Coloured Diode Option
 Finish: Stainless Steel
 Material: 316 STS
 Dim: 47 x D65mm
 C/W: Recessed Clips & Cable Feed

Cut Out	CRI	lm	mA	Watts	Class	IES
36mm ø	80	85	350	1.2W	IC	✓

EXTERIOR UPLIGHT MINI - IP67

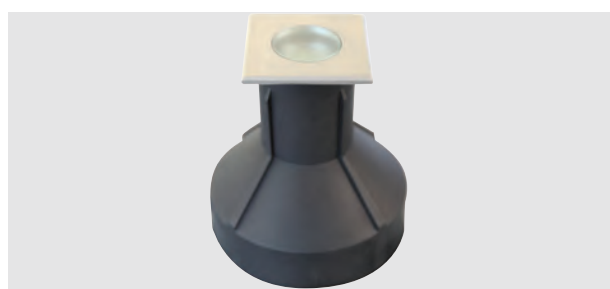


R704 STSP

Diode: Osram 35° Constant Current
 Colour: Warm White 3150K & Coloured Diode Option
 Finish: Stainless Steel
 Material: 316 STS & Plastic
 Dim: 47 x D90mm
 C/W: Plastic Housing & Cable Feed.
 Suitable: Walk Over In Deck or in Concrete only

Insert	CRI	lm	mA	Watts	IES
82 x 88mm ø	80	85	350	1.2W	✓

EXTERIOR UPLIGHT MINI - IP67

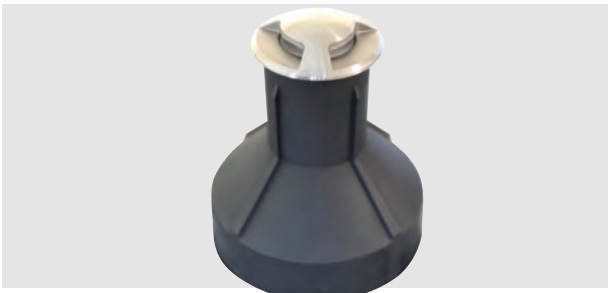


R758 STSP

Diode: Osram 35° Constant Current
 Colour: Warm White 3150K & Coloured Diode Option
 Finish: Stainless Steel
 Material: 316 STS & Plastic
 Dim: 47 x 47 x D90mm
 C/W: Plastic Housing & Cable Feed
 Suitable: Walk Over In Deck or in Concrete only

Insert	CRI	lm	mA	Watts	IES
82 x 88mm ø	80	85	350	1.2W	✓

EXTERIOR UPLIGHT TRIPLE BEAM - IP67



R709 STSP

Diode: Osram 35° Constant Current
 Colour: Warm White 3150K & Coloured Diode Option
 Finish: Stainless Steel
 Material: 316 STS & Plastic
 Dim: 47 x D90mm
 C/W: Plastic Housing & Cable Feed.
 Suitable: Walk Over In Deck or in Concrete only

Insert	CRI	lm	mA	Watts	IES
82mm x 88mm ø	80	85	350	1.2W	✓

EXTERIOR UPLIGHT 25° TILT - IP67

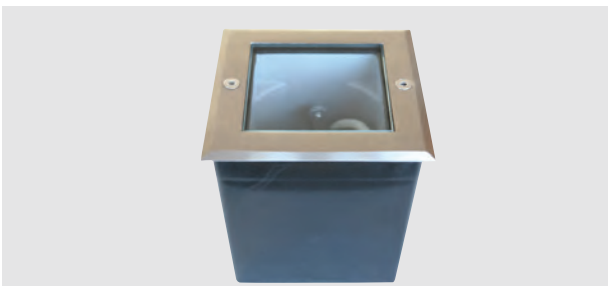


EX135 COL

Diode: Osram 35° Constant Current
 Colour: Warm White 3150K or Nat. White 4000K
 Finish: EX135 STSL-Stainless Steel, EX135 COL- Copper
 Material: 316 Stainless Steel, Copper & Aluminium
 Dim: 120 x D115mm
 NB: Option:Frosted Glass / Driver Sold seperately
 Suitable: Walk Over In Deck or in Concrete only

Insert	CRI	lm	mA	Watts	IES
108mm ø	80	270	350	3W	✓

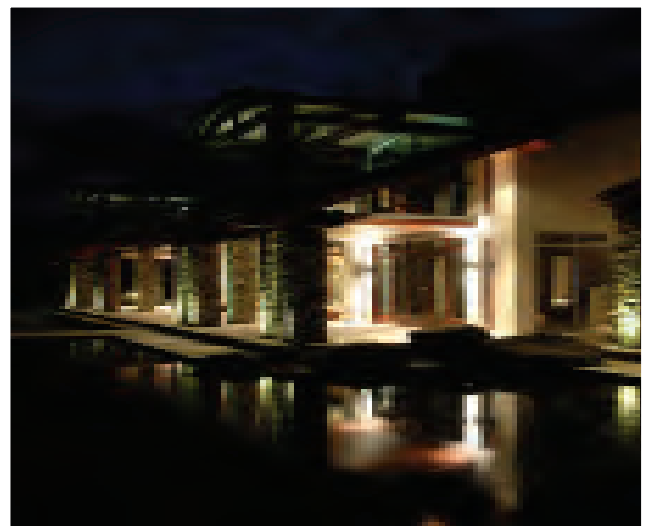
EXTERIOR UPLIGHT 25° TILT - IP67



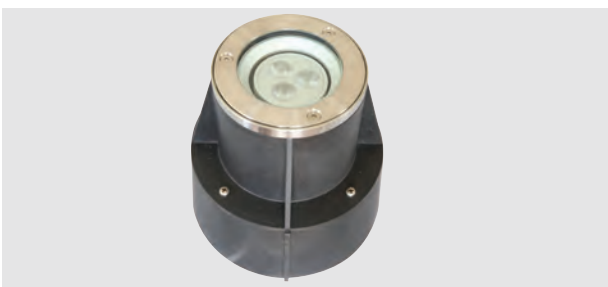
EX115 STSL

Diode: Osram Constant Current
 Colour: Warm White 3150K or Nat. White 4000K
 Finish: Stainless Steel
 Material: 316 STS & Aluminium & Plastic Housing
 Dim: 120 x 120 x D115mm
 NB: Option:Frosted Glass / Driver sold seperately
 Suitable: Walk Over In Deck or in Concrete only

Insert	CRI	lm	mA	Watts	IES
110mm ø	80	270	350	3W	✓



EXTERIOR UPLIGHT 20° TILT - IP67



EX137 STSL

Diode: Osram 35° Constant Current
 Colour: Warm White 3150K
 Finish: Stainless Steel
 Material: 316 STS & Plastic Housing
 Dim: Rim107 x D165mm
 NB: Driver sold seperately
 Suitable: Walk Over In Deck or in Concrete only

Base	CRI	lm	mA	Watts	IES
172mm ø	80	255	350	3.6W	✓

EXTERIOR UPLIGHT 20° TILT - IP67



EX138 STSL

Diode: Osram 35° Constant Current
 Colour: Warm White 3150K
 Finish: Stainless Steel
 Material: 316 STS & Plastic Housing
 Dim: Rim: 107 x 107 x D165mm
 NB: Driver sold seperately
 Suitable: Walk Over In Deck or in Concrete only

Base	CRI	lm	mA	Watts	IES
172mm ø	80	255	350	3.6W	✓

EXTERIOR UPLIGHT 20° TILT - IP67

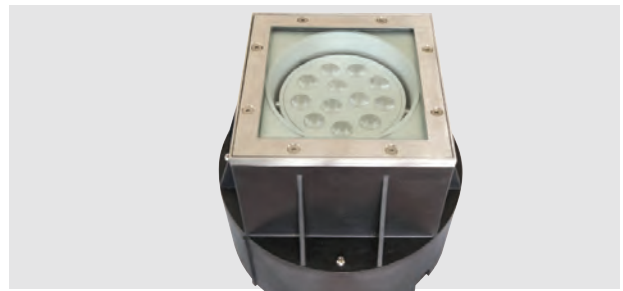


EX141 STSL

Diode: Osram 35° Constant Current
 Colour: Warm White 3150K
 Finish: Stainless Steel
 Material: 316 STS & Plastic Housing
 Dim: Rim: 162 x D207mm
 NB: Driver sold separately
 Suitable: Walk Over In Deck or in Concrete only

Base	CRI	lm	mA	Watts	IES
241mm ø	80	1020	350	14.4W	✓

EXTERIOR UPLIGHT 20° TILT - IP67



EX142 STSL

Diode: Osram 35° Constant Current
 Colour: Warm White 3150K
 Finish: Stainless Steel
 Material: 316 STS & Plastic Housing
 Dim: Rim: 162 x 162 x D207mm
 NB: Driver sold separately
 Suitable: Walk Over In Deck or in Concrete only

Base	CRI	lm	mA	Watts	IES
241mm ø	80	1020	350	14.4W	✓

EXTERIOR BOLLARD LOW GLARE - IP66

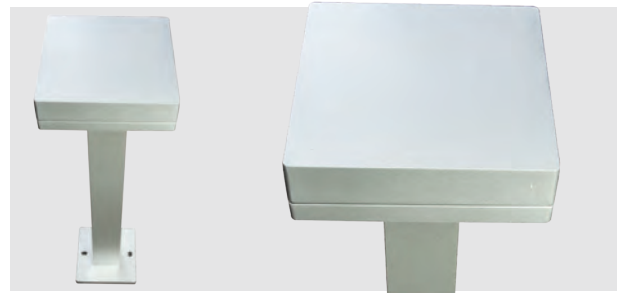


EX160 BOBL

Diode: Osram GD+ 75° 240V DC Constant Current
 Colour: Warm White 3150K
 Finish: EX160 BOBL-Black, EX160 BOSL-Silver Resin Pwdr Coat
 Material: Aluminium
 Dim: 180mm x H600mm
 C/W: Driver
 Option: Can be shortened

CRI	lm	mA	Watts	IES
80	510	350	7.2W	✓

EXTERIOR BOLLARD LOW GLARE - IP66



EX161 BOSL

Diode: Osram GD+ 75° 240V DC Constant Current
 Colour: Warm White 3150K
 Finish: EX161 BOBL-Black, EX161 BOSL-Silver Resin Pwdr Coat
 Material: Aluminium
 Dim: 180mm x 180mm x H:600mm
 C/W: Driver
 Option: Can be shortened

CRI	lm	mA	Watts	IES
80	510	350	7.2W	✓

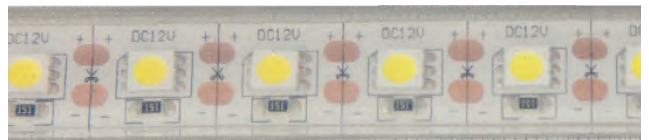
LED1068 - 24V EXTERIOR SILICON TAPE - IP68

Diode: 24V DC Constant Voltage
 Dimmable: with Driver & DRLC24V 100W
 NB: Std 5metre roll Custom Cut Length - non returnable

Code	Colour	Dimension:	Diodes/m	Watts	Cut
LED1068B	Blue	12 x D4mm	60/1m	5W	100
LED1068G	Green	12 x D4mm	60/1m	5W	100
LED1068R	Red	12 x D4mm	60/1m	5W	100
LED1068Y	Yellow	12 x D4mm	60/1m	5W	100
LED1068NW	Nat.White	12 x D4mm	60/1m	5W	100
LED1068WW	W. White	12 x D4mm	60/1m	5W	100
LED1068NWH	Nat. White	12 x D4mm	60/1m	15W	100
LED1068WWH	W.White	12 x D4mm	60/1m	15W	100
LED1068RGB	RGB	12 x D4mm	60/1m	15W	100
12V EXTERIOR					
LED1068NWH1	Nat.White	12 x D4mm	72/1m	17W	13.8
LED1068WWH1	W.White	12 x D4mm	72/1m	17W	13.8

24V FOUR COLOUR RGB+

LED1068RGBW	W.White	12 x D2mm	240/1m	18W	166
LED1068RGBN	Nat.White	12 x D2mm	240/1m	18W	166



LUMENS

The LED1068 5W Standard ribbon is 6 Lumens/Chip multiplied by the number of diodes that are on each length of ribbon.

The LED1068 High Output 15W & 17W around 14 Lumens /Chip multiplied by the number of leds that are on each length of ribbon.

ACCESSORIES

- LED1068CL Silicon Tape IP68 Mounting Clip
- LED1068EC Silicon Tape IP68 End Cap
- LED1068 J Factory Join
- LED1068FE Feed Cable 300mm tail soldered to board (c/w 2 x LED1068EC)

10W - 100W EXTERIOR FLOOD RANGE IP67

30W, 50W & 100W Floods complete with "Bleed Valve" for temperature regulation and increased lifespan.



EX210 EXTERIOR FLOOD (10W) IP67

Diode: Bridgelux LED
 Colour: Nat. White 4000K, Warm White 3150K
 Finish: EX210 1BNS-Silver or EX210 1BNBL-Black - Natural
 EX210 1BWS- Silver or EX210 1BWBL- Black - Warm
 Material: Die Cast Aluminium & St. Steel Components
 Dim: W125 x H170 x D47mm
 C/W: Incorporated Driver, & lead

CRI	lm	Watts	IES
80	WW:700 NW780	10W	✓

EX211 EXTERIOR FLOOD (20W) IP67

Diode: Bridgelux LED
 Colour: Nat White 4000K, Warm White 3150K
 Finish: EX211 1BNS-Silver, EX211 1BNBL-Black - Natural
 EX211 1BWS- Silver, EX211 1BWBL- Black - Warm
 Material: Die Cast Aluminium & St. Steel Components
 Dim: W181 x H225 x D63mm
 C/W: Incorporated Driver, & Lead

CRI	lm	Watts	IES
80	WW:1400 NW1560	20W	✓

EX212 EXTERIOR FLOOD (30W) IP67

Diode: Bridgelux LED
 Colour: Nat White 4000K Warm White 3150K
 Finish: EX212 1BNS-Silver or EX212 1BNBL-Black - Natural
 EX212 1BWS- Silver or EX212 1BWBL- Black - Warm
 Material: Die Cast Aluminium & St. Steel Components
 Dim: W260 x H330 x D90.7
 C/W: Incorporated Driver, & Lead

CRI	lm	Watts	IES
80	WW:2100 NW:2340	30W	✓

EX213 EXTERIOR FLOOD (50W) IP67

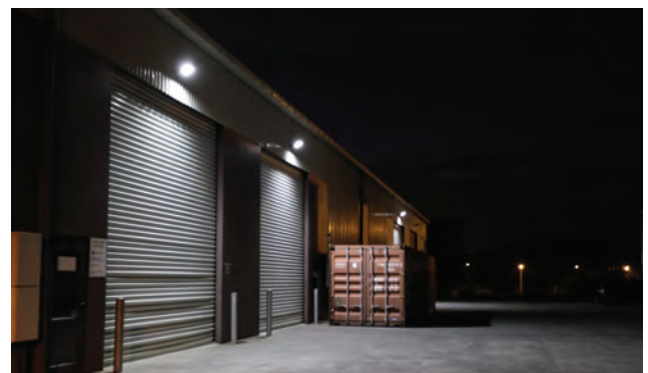
Diode: Bridgelux LED
 Colour: Nat White 4000K, Warm White 3150K
 Finish: EX213 1BNS-Silver or EX213 1BNBL-Black - Natural
 EX213 1BWS- Silver or EX213 1BWBL- Black - Warm
 Material: Die Cast Aluminium & St. Steel Components
 Dim: W330 x H430 x D120.6
 C/W: Incorporated Driver, & Lead

CRI	lm	Watts	IES
80	WW3500 NW:3900	50W	✓

EX214 EXTERIOR FLOOD (100W) IP67

Diode: Bridgelux LED
 Colour: Nat White 4000K
 Finish: EX214 1BNBL-Black - Natural only
 Material: Die Cast Aluminium & St. Steel Components
 Dim: W395 x H535 x D146
 C/W: Incorporated Driver, & Lead

CRI	lm	Watts	IES
80	NW:8000	100W	✓



INT/EXT. FLOOD 90° TILT/355° ROTATE - IP65



EX225 1BNBL

Diode: Oslon LED Diode
 Colour: Natural White 4000K
 Finish: EX225 1BNBL-Silver, EX225 1BNBL-Black
 Material: Die Cast Aluminium with Safety Glass
 C/W: Driver

Dim	CRI	lm	Watts	IES
H334 x W200 x D146	TBA	3902	65W	✓

EXTERIOR FLOOD COMMERCIAL - IP65

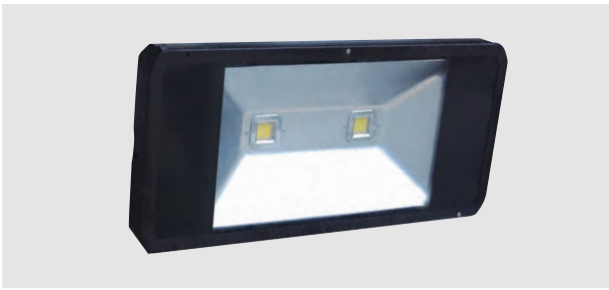


EX216 1BCBL

Diode: Bridgelux 120°
 Colour: Cool White 5000K
 Finish: Black
 Material: Alu Glass Frame with Stainless Steel Hardware
 Dim: 367 x 292 x D115mm
 C/W: Incorporated Driver, 3 Pin Plug & Lead

CRI	lm	Watts	IES
70	8700	100W	TBA

EXTERIOR FLOOD COMMERCIAL - IP65



EX220 1BCBL

Diode: Bridgelux 120°
 Colour: Cool White 5000K
 Finish: Black
 Material: Alu Glass Frame with Stainless Steel Hardware
 Dim: 610 x 290 x D115mm
 C/W: Incorporated Driver, 3 Pin Plug & Lead

CRI	lm	Watts	IES
70	13900	160W	TBA

LED BATTERY WORK LIGHT - IP65



LED200 10WN

Diode: Epistar Integrated LED 4000K,
 Finish: Green
 Material: Aluminium & Toughened Glass
 Dim: L145 x W160 x H240mm
 Battery: Li-ion Battery 7.4V 5200mAh, Samsung Battery
 C/W: Car charger and mains charger
 NB: 35,000 hrs / Battery Life 6-8 hours (Working Time 6 hrs)

Voltage	mAh	lms	Watts
DC12-24V	5200 Battery	900	10W

LED BATTERY WORK LIGHT - IP65



LED200 20WN

Diode: Epistar Integrated LED 4000K, s
 Finish: Green
 Material: Aluminium & Toughened Glass
 Dim: 215 x 185 x 285mm
 Battery: Li-ion battery 7.4V, 10,400mAh Samsung Battery
 C/W: Car charger and mains charger
 NB: 35,000 hrs / Battery Life 6-8 hours (Working Time 6 hrs)

Voltage	mAh	lms	Watts
DC12-24V	10,400 battery	1800	20W

LED BATTERY WORK LIGHT - IP65



LED200 20WRGB

Diode: Epistar Integrated LED
 Finish: Red
 Material: Aluminium
 Dim: 215 x 185 x 285mm
 Battery: Li-ion Battery 7.4V 8,800mAh normal battery
 C/W: Remote control, car charger and mains charger
 NB: Battery Life 6-8 hours (working time 3 hrs)

Voltage	mAh	lms	Watts
DC 12-24V	8800 Battery	n/a	20W

LUX105WL



Exterior Transformer IP67

Prim: 240V Sec: 11.6V AC
Dim: L80mm x W30mm x D27mm
Wattage: 35-105W

GP1



Amphibian Torodial Trans. IP67

Prim: 230V 12V AC
Dia: 105mm x 152mm
Wattage: 50W, 100W, 200W, 300W
400W or 500W

SPE60WL



Exterior Transformer IP67

Prim: 240V Sec: 11.5V AC
Dim: 50mm x 30mm
Wattage: 20-70W

DRIP350 8W



LED Driver IP67

Prim: 240V Sec: 3-24V DC
Voltage: 350mA Constant Current
Dim: L86mm x W86mm x D28mm
Watts: 1-9W

DRIP350 10W



LED Driver IP67

Prim: 240V Sec: 12-30V DC
Voltage: 350mA Constant Current
Dia: 48mm x 20mm
Watts: 4 -10W

DRIP350 14W



LED Driver IP67

Prim: 240V Sec: 28-40V DC
Voltage: 350mA Constant Current
Dia: 48mm x 20mm
Watts: 10-14W

DRIP350 18W



LED Driver IP67

Prim: 240 V Sec: 3-54V DC
Voltage: 350mA Constant Current
Dim: L128mm x W128mm x D64mm
Watts: 10-18W

DRIP700 6W



LED Driver IP67

Prim: 240V Sec: 4-10V DC
Voltage: 700mA Constant Current
Dim: L86mm x W86mm x D28mm
Watts: 3-6W

DRIP700 18W



LED Driver IP67

Prim: 240V Sec: 12-27V DC
Voltage: 700mA Constant Current
Dim: L128mm x W128mm x D64mm
Watts: 10-18W

DRIPJO



LED Cable Joiner Only IP67

Dim: L50mm x W50mm x D28mm

DRIPCV12 12W IP67



Constant Voltage LED Driver IP67

Prim: 240V Sec: 12V DC
 Dim: L64 x W33 x D20mm
 Watts: 0-12W

DRIPCV12 36W IP67



Constant Voltage LED Driver IP67

Prim: 240V Sec: 12V DC
 Dim: L169 x W55 x D30.5mm
 Watts: 0-36W

DRIPCV12 75W IP67



Constant Voltage LED Driver IP67

Prim: 240V Sec: 12V DC
 Dim: L186 x W64 x D39mm
 Watts: 0-75W

DRIPCV24 12W IP67



Constant Voltage LED Driver IP67

Prim: 240V Sec: 24V DC
 Dim: L64 x W33 x D20mm
 Watts: 0-12W

DRIPCV24 36W IP67



Constant Voltage LED Driver IP67

Prim: 240V Sec: 24V DC
 Dim: L169 x W55 x D30.5mm
 Watts: 0-36W

DRIPCV24 75W IP67



Constant Voltage LED Driver IP67

Prim: 240V Sec: 24V DC
 Dim: L186 x W64 x D39mm
 Watts: 0-75W

TERMS & CONDITIONS

- Halcyon Lighting has taken all due care to ensure that all details listed in this catalogue are correct, however should any errors be found Halcyon Lighting reserves the right to make alterations without notice.
- Product Specifications and Appearances are subject to change without prior notice. Imported product is subject to change without notice.
- Cutting of holes prior to receiving goods is entirely at purchasers risk.
- Returned products must be delivered to Halcyon Lighting within 30 days of their receipt by the purchaser.
- Goods made to special order may be returned for credit unless not to specification or otherwise not in accordance with any express or implied term of contract sale.
- No credits given on products over 4 months old.
- A restocking fee of 10% applies to any goods not returned within 30 days from date of invoice.
- Goods ordered remain the property of Halcyon Lighting until paid in full.
- Unless specified lamps & transformers are not included.

WARRANTY

Halcyon Lighting Halogen, Metal Halide and Fluorescent luminaires carry a standard 1 year warranty against manufacturing faults. This excludes lamps, lamp holders, transformers, control gear and ballasts, which are regarded as consumables.

Exterior Mariner Range carries a lifetime warranty on copper and stainless steel components. They are all manufactured from non-reactive quality components making them waterproof, robust and long lasting. This excludes lamps, lamp holders, transformers, drivers and seals which are regarded as consumables.

All Halcyon LED products carry a standard 3 year warranty against manufacturing faults.
All Halcyon LED Drivers carry a standard 5 year warranty against manufacturing faults.
LED's running on 350mA lamp life of up to 50,000 hours. LED's running on 700mA lamp life of up to 30,000 hours. LED's running on 24V DC have a lamp life of up to 50,000 hours.

Warranties on all Halcyon LED luminaires only apply when used in conjunction with Halcyon Supplied Driver Ranges.

SUPPLIER DECLARATION OF CONFORMITY (SDoC)

All Halcyon products comply with Essential Safety Requirements for Electrical Equipment. Edition AS / NZS3820:2009 / AS/NZS60598:2:2001 - Amendment A July 2011
Documentation is available on request.

For further information
visit our website at

www.halcyonlights.co.nz
{09} 273 9177



10 Basalt Place, East Tamaki, Auckland, New Zealand
PO Box 58-501, Botany, Manukau 2163, Auckland
Ph: (09) 273-9177 Fax: (09) 273-9155 Free Fax: 0800 101-027
Email: sales@halcyonlights.co.nz Web: www.halcyonlights.co.nz



NZLMS | New Zealand Lighting
Manufacturers & Suppliers

